

# RODLAND

*Who's that cute cuddly person charging over the hill, rod in hand? Could it be Andy Roberts with the second - and final - part of our complete guide to this sweet platform puzzler. And if you're still having problems, check out the small print at the bottom of the page for our definitive cheats list...*

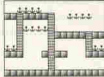
STAGE 17



STAGE 18



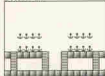
STAGE 21



STAGE 22



STAGE 19



STAGE 20



STAGE 23



STAGE 24



On level 18 it's better to forget about collecting all the flowers rather than get trapped in a top corner. On level 19 avoid nasties by jumping repeatedly from one platform to another. And take care when teleporting on level 20; it's easy to drop onto a monster.

Not too many problems here but use of your portable ladder well and you'll be paid dividends. The end of level monster on level 24 is an elephant which bumps up and down on the ground. Beating him requires well-timed running in, bashing and running out.

STAGE 25



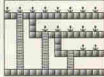
STAGE 26



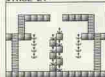
STAGE 29



STAGE 30



STAGE 27



STAGE 28



STAGE 31



The most important skill on this quartet of levels is dropping off platforms and collecting flowers in mid-fall. If you get trapped on a long ladder, the only way to avoid certain death is by stepping sideways into mid-air. Flower-gathering on level 27 is ridiculously hard.

Beware of the dead ends on level 30 and be quick with the ladder if cornered. Mystery level 32 holds the final guardian - an evil demon. Each time you defeat him he returns to fight again, only he's bigger than before. Kill him three times and final victory will be yours.

If you're still having problems try these cheats. Action Replay POKES - infinite lives POKE 26777,173-POKE 26783,173 - infinite credits POKE 24797,173 - infinite shields - POKE 24584,182. And here's an extra cheat for anyone without a whizzy cartridge gadget - if you collect the EXTRA bubbles and immediately press the fire button before the fairy appears, you can skip levels, one for every button click.